



MISSISSIPPI LOTTERY CORPORATION

INVITATION FOR BID 0002

**PROPOSAL SUBMISSION DEADLINE: MONDAY,
SEPTEMBER 30, 2019 AT 3:00 P.M. (CENTRAL TIME)**

**PROPOSAL DUE TO: MISSISSIPPI LOTTERY CORPORATION
INVITATION FOR BID 0002: FURNITURE AND
INSTALLATION**

**ATTN: CERRIA WALKER, PROCUREMENT & PURCHASING
MANAGER
1080 RIVER OAKS DRIVE, SUITE B204,
FLOWOOD, MS 39232**

(Monday, September 16, 2019)



Dear Bidder:

Please provide a furniture and installation bid for the Mississippi Lottery Corporation (MLC) Offices at 1080 River Oaks Drive, Suite B100.

Please note that if you are selected as the Vendor for this project you must be able to provide the following:

- You must be able to deliver and install all furniture at site no later than Friday, November 15, 2019, unless the MLC build-out has not been completed.
- You must be able to produce renderings of specific pieces in the color and finish client selects.
- You will be required to produce a plan with dimensioned floor electrical box locations.
- Finish samples for furniture pieces will need to be delivered to Cerria Walker for MLC approval.
- Successful bidder must follow River Oaks building rules and regulations for installation.
- You must provide proof of a bid bond at 5% of the total cost of proposed amount of bid.

Attached you'll find a furniture bid package that includes:

- Individual furniture bid sheets for each selected piece
- Appendix A- Detailed Workstation and private office specification information
- Appendix B – Cut Sheets + Technical Specification Information
- Tagged floor plan for reference (quantities for all pieces should be bid per the floor plan)

Any substitutions must be equal or supersede specified item. When submitting substitutions, product information must be formatted as bid packet and all specification information (this includes but is not limited to cut sheets, technical specification information, warranty details, all model numbers, etc.) must accompany the substitution. No substitutions will be accepted without proper documents. Your bid proposal must be returned to the attention of Cerria Walker, Procurement & Purchasing Manager, Monday, September 30, 2019 at 3:00 p.m. (Central Time). A digital and paper copy of bid is required. The outside cover of the package containing the proposal shall be marked:

IFB-0002: FURNITURE AND INSTALLATION
ATTN: CERRIA WALKER, PROCUREMENT & PURCHASING MANAGER
1080 RIVER OAKS DRIVE, SUITE B204
FLOWOOD, MS 39232

Thank you,

Cerria Walker
Procurement & Purchasing Manager



PICTURE FOR REFERENCE ONLY

ITEM #	C-1
MFR MODEL #	
DESCRIPTION	ALLSTEEL EVO TASK CHAIR LUMBAR, MESH BACK, SEAT SLIDER, 4D ARM, SEE APPENDIX B FOR SPEC REQUIREMENTS. MUST BE RATED UP TO 300LBS.
FABRIC/FINISH	MESH TBD (MUST HAVE 5+ COLOR OPTIONS, TITANIUM FRAME, MULTISURFACE CASTERS, GR 8 FABRIC TBD.
PRICE EACH	
MANUFACTURER	ALLSTEEL

	<p>MS LOTTERY BUILDING</p>	<p>PLAN KEY</p>
		<p>C-1</p>



PICTURE FOR REFERENCE ONLY

ITEM #	C-2
MFR MODEL #	
DESCRIPTION	ALLSTEEL EVO GUEST CHAIR MESH BACK, FIXED CANTELIEVER ARM, GLIDES SEE APPENDIX B FOR SPEC REQUIREMENTS. MUST BE RATED UP TO 300LBS.
FABRIC/FINISH	MESH TBD (MUST HAVE 5+ COLOR OPTIONS), TITANIUM FRAME, GR 8 FABRIC TBD
PRICE EACH	
MANUFACTURER	ALLSTEEL

	<p>MS LOTTERY BUILDING</p>	<p>PLAN KEY</p>
		<p>C-2</p>



PICTURE FOR REFERENCE ONLY

ITEM #	C-3
MFR MODEL #	
DESCRIPTION	ALLSTEEL EVO CONFERENCE CHAIR UPHOLSTERED SEAT AND BACK, FIXED ARMS, CONTRASTING STITCHING REQUIRED. SEE APPENDIX B FOR SPEC REQUIREMENTS. MUST BE RATED UP TO 300LBS.
FABRIC/FINISH	POLISHED ALUMINUM ARMS FRAME, GR 8 FABRIC TBD, MULTISURFACE CASTERS
PRICE EACH	
MANUFACTURER	ALLSTEEL

	<p>MS LOTTERY BUILDING</p>	<p>PLAN KEY</p> <p>C-3</p>
--	----------------------------	----------------------------



PICTURE FOR REFERENCE ONLY

ITEM #	C-4
MFR MODEL #	
DESCRIPTION	ALLSTEEL SVELTE CONFERENCE CHAIR UPHOLSTERED SEAT AND BACK, FIXED ARMS, HIGHBACK, CHANNEL STITCHING REQUIRED. SEE APPENDIX B FOR SPEC REQUIREMENTS. MUST BE RATED UP TO 300LBS.
FABRIC/FINISH	POLISHED ALUMINUM ARMS & FRAME, GR 8 FABRIC TBD, MULTISURFACE CASTERS
PRICE EACH	
MANUFACTURER	ALLSTEEL

	<p>MS LOTTERY BUILDING</p>	<p>PLAN KEY</p> <p>C-4</p>
--	----------------------------	----------------------------



PICTURE FOR REFERENCE ONLY

ITEM #	C-5
MFR MODEL #	
DESCRIPTION	ALLSTEEL NIMBLE CHAIR ALL POLY, POLISHED FRAME, SEE APPENDIX B FOR SPEC REQUIREMENTS. MUST BE RATED UP TO 300LBS.
FABRIC/FINISH	POLISHED ALUMINUM FRAME, POLY TBD
PRICE EACH	
MANUFACTURER	ALLSTEEL

	<p>MS LOTTERY BUILDING</p>	<p>PLAN KEY</p>
		<p>C-5</p>



PICTURE FOR REFERENCE ONLY

ITEM #	C-6
MFR MODEL #	
DESCRIPTION	ALLSTEEL Vicinity CHAIR ALL POLY, PAINTED FRAME, SEE APPENDIX B FOR SPEC REQUIREMENTS. MUST BE RATED UP TO 300LBS.
FABRIC/FINISH	PAINTED FRAME COLOR TBD, POLY TBD MUST OFFER 16 PAINT COLORS AND 8 POLY COLORS
PRICE EACH	
MANUFACTURER	ALLSTEEL

	<p>MS LOTTERY BUILDING</p>	<p>PLAN KEY C-6</p>
--	----------------------------	--------------------------------



PICTURE FOR REFERENCE ONLY

ITEM #	C-7
MFR MODEL #	986
DESCRIPTION	INDIANA TRIFT LADDER BACK CHAIR WITH UPHOLSTERED SEAT. SEE APPENDIX B FOR SPEC REQUIREMENTS. MUST BE RATED UP TO 253LBS
FABRIC/FINISH	WOOD FRAME TBD; UPHOLSTERED SEAT GR 10 FABRIC TBD
PRICE EACH	
MANUFACTURER	INDIANA - NO EQUALS ACCEPTED

	<p>MS LOTTERY BUILDING</p>	<p>PLAN KEY</p>
		<p>C-7</p>



PICTURE FOR REFERENCE ONLY

ITEM #	C-8
MFR MODEL #	576
DESCRIPTION	INDIANA PORTIA LOUNGE CHAIR. SEE APPENDIX B FOR SPEC REQUIREMENTS.
FABRIC/FINISH	FABRIC GRADE 10 TBD; WOOD FINISH TBD
PRICE EACH	
MANUFACTURER	INDIANA - NO ALTERNATES ACCEPTED

	<p>MS LOTTERY BUILDING</p>	<p>PLAN KEY</p>
		<p>C-8</p>



PICTURE FOR REFERENCE ONLY

ITEM #	C-9
MFR MODEL #	5763
DESCRIPTION	INDIANA PORTIA SOFA. SEE APPENDIX B FOR SPEC REQUIREMENTS.
FABRIC/FINISH	FABRIC GRADE 10 TBD; WOOD FINISH TBD
PRICE EACH	
MANUFACTURER	INDIANA - NO ALTERNATES ACCEPTED

	<p>MS LOTTERY BUILDING</p>	<p>PLAN KEY</p>
		<p>C-9</p>



PICTURE FOR REFERENCE ONLY

ITEM #	T-1
MFR MODEL #	
DESCRIPTION	ALLSTEEL AWARE, 24X60X29H. FIXED TABLE ON CASTERS W/ MODESTY PANEL. POWER UP MODULE IN TABLE. GANGING BRACKETS REQUIRED. SEE APPENDIX B FOR SPEC REQUIREMENTS.
FABRIC/FINISH	POLISH ALUMINUM BASE, SILVER CASTERS, DAISEY CHAINED POWER, POWER UP MODULE IN SURFACE, MODESTY PANEL REQUIRED
PRICE EACH	
MANUFACTURER	ALLSTEEL

	<p>MS LOTTERY BUILDING</p>	<p>PLAN KEY</p>
		<p>T-1</p>



PICTURE FOR REFERENCE ONLY

ITEM #	T-2
MFR MODEL #	
DESCRIPTION	ALLSTEEL AWARE, 24X84X29H. FIXED TABLE ON CASTERS W/ MODESTY PANEL. POWER UP MODULE IN TABLE. GANGING BRACKETS REQUIRED. SEE APPENDIX B FOR SPEC REQUIREMENTS.
FABRIC/FINISH	POLISH ALUMINUM BASE, SILVER CASTERS, DAISEY CHAINED POWER, POWER UP MODULE IN SURFACE, MODESTY PANEL REQUIRED
PRICE EACH	
MANUFACTURER	ALLSTEEL

	<p>MS LOTTERY BUILDING</p>	<p>PLAN KEY</p>
		<p>T-2</p>



PICTURE FOR REFERENCE ONLY

ITEM #	T-3
MFR MODEL #	
DESCRIPTION	ALLSTEEL COMMUNITY TABLE, 42D X 96W X 29H. SEE APPENDIX B FOR SPEC REQUIREMENTS.
FABRIC/FINISH	PAINT GR 3 TBD; LAMIANTE GR 3 TBD; POWER/DATA/HDMI REQUIRED IN TABLE; WIRE MANAGEMENT REQUIRED.
PRICE EACH	
MANUFACTURER	ALLSTEEL

	<p>MS LOTTERY BUILDING</p>	<p>PLAN KEY</p> <p>T-3</p>
--	----------------------------	-----------------------------------



PICTURE FOR REFERENCE ONLY

ITEM #	T-4
MFR MODEL #	01-WMGR4, 01-0430VPB, 92-48144BT
DESCRIPTION	INDIANA AURA CONFERENCE TABLE. BOAT SHAPE TABLE. 48D X 144W X 29H SEE APPENDIX B FOR SPEC REQUIREMENTS.
FABRIC/FINISH	BOAT SHAPED TABLE, ALUMINUM V WRAPPED PANEL BASES; POWER REQUIRED. WIRE MANAGEMENT REQUIRED LAMIANTE FINISH TBD
PRICE EACH	
MANUFACTURER	ALLSTEEL

	<p>MS LOTTERY BUILDING</p>	<p>PLAN KEY</p> <p>T-4</p>
--	----------------------------	-----------------------------------



PICTURE FOR REFERENCE ONLY

ITEM #	T-5
MFR MODEL #	
DESCRIPTION	ALLSTEEL VICINITY TABLE. 36" SQUARE X 29"H. SEE APPENDIX B FOR SPEC REQUIREMENTS.
FABRIC/FINISH	LAMINATE GR 3 TBD; PAINT: SILVER
PRICE EACH	
MANUFACTURER	ALLSTEEL

	<p>MS LOTTERY BUILDING</p>	<p>PLAN KEY</p>
		<p>T-5</p>



PICTURE FOR REFERENCE ONLY

ITEM #	T-6
MFR MODEL #	36-1824ET
DESCRIPTION	INDIANA WILMINGTON OCCASIONAL END TABLE. 27W X 18D X 21H ATTACHMENT FOR SPEC REQUIREMENTS.
FABRIC/FINISH	WOOD FINISH TBD
PRICE EACH	
MANUFACTURER	INDIANA - NO ALTERANTES ACCEPTED

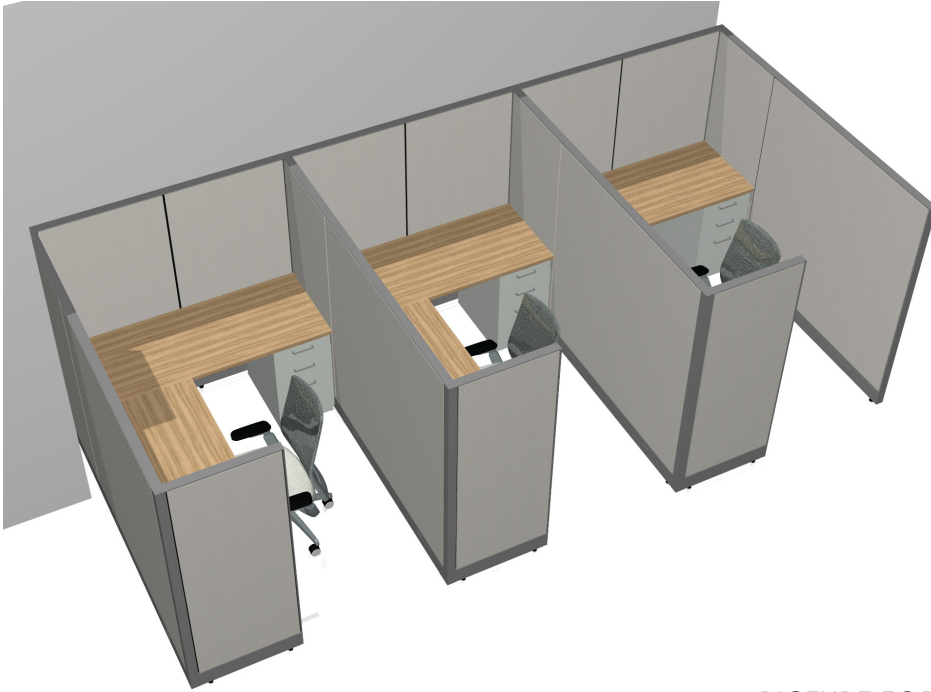
	<p>MS LOTTERY BUILDING</p>	<p>PLAN KEY</p> <p>T-6</p>
--	----------------------------	-----------------------------------



PICTURE FOR REFERENCE ONLY

ITEM #	T-7
MFR MODEL #	36-1847MT
DESCRIPTION	INDIANA WILMINGTON OCCASIONAL MAGAZINE TABLE. 47W X 18D X 15H ATTACHMENT FOR SPEC REQUIREMENTS.
FABRIC/FINISH	WOOD FINISH TBD
PRICE EACH	
MANUFACTURER	INDIANA - NO ALTERNATES ACCEPTED

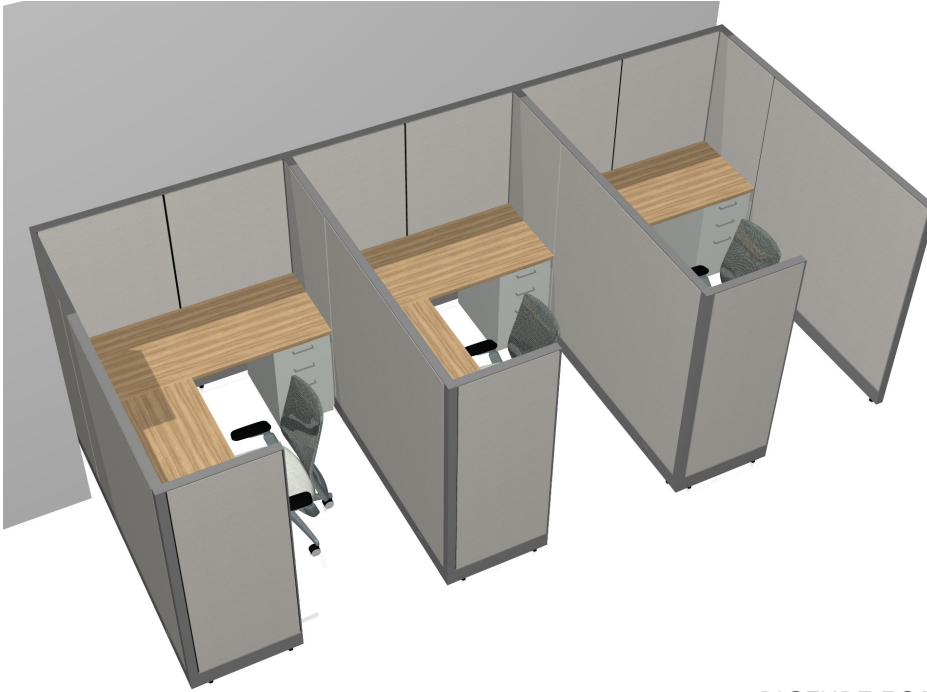
	<p>MS LOTTERY BUILDING</p>	<p>PLAN KEY</p>
		<p>T-7</p>



PICTURE FOR REFERENCE ONLY


ITEM #	WS-1
MFR MODEL #	
DESCRIPTION	ALLSTEEL TERRACE, SEE APPENDIX A AND B FOR SPEC REQUIREMENTS.
FABRIC/FINISH	PAINT GR 3 TBD; FABRIC GR 4 TBD; LAMINATE TILES GR 3 TBD; LAMINATE SURFACE GR 3 TBD; STORAGE PAINT GR 4 TBD; 65"H PANEL, 4 DUPLEX RECEPTACLES PER STATION, 1 FOUR PORT DATA FACEPLATE PER STATION, BASE INFEED.
PRICE EACH	
MANUFACTURER	ALLSTEEL

	MS LOTTERY BUILDING	PLAN KEY WS-1
--	---------------------	-----------------------------



PICTURE FOR REFERENCE ONLY

ITEM #	WS-1A
MFR MODEL #	
DESCRIPTION	ALLSTEEL TERRACE, SEE APPENDIX A AND B FOR SPEC REQUIREMENTS.
FABRIC/FINISH	PAINTE GR 3 TBD; FABRIC GR 4 TBD; LAMINATE TILES GR 3 TBD; LAMINATE SURFACE GR 3 TBD; STORAGE PAINT GR 4 TBD; 50"H PANEL, WITH 7.5"H FRAMELESS FROSTED GLASS STACKER, 4 DUPLEX RECEPTACLES PER STATION, 1 FOUR PORT DATA FACEPLATE PER STATION, BASE INFEEED.
PRICE EACH	
MANUFACTURER	ALLSTEEL

	MS LOTTERY BUILDING	PLAN KEY
		WS-1A



PICTURE FOR REFERENCE ONLY

ITEM #	WS-1B
MFR MODEL #	
DESCRIPTION	ALLSTEEL TERRACE, SEE APPENDIX A AND B FOR SPEC REQUIREMENTS.
FABRIC/FINISH	PAINT GR 3 TBD; FABRIC GR 4 TBD; LAMINATE TILES GR 3 TBD; LAMINATE SURFACE GR 3 TBD; STORAGE PAINT GR 4 TBD; 50"H PANEL, WITH 7.5"H FRAMELESS FROSTED GLASS STACKER, 4 DUPLEX RECEPTACLES PER STATION, 1 FOUR PORT DATA FACEPLATE PER STATION, BASE INFEEED.
PRICE EACH	
MANUFACTURER	ALLSTEEL

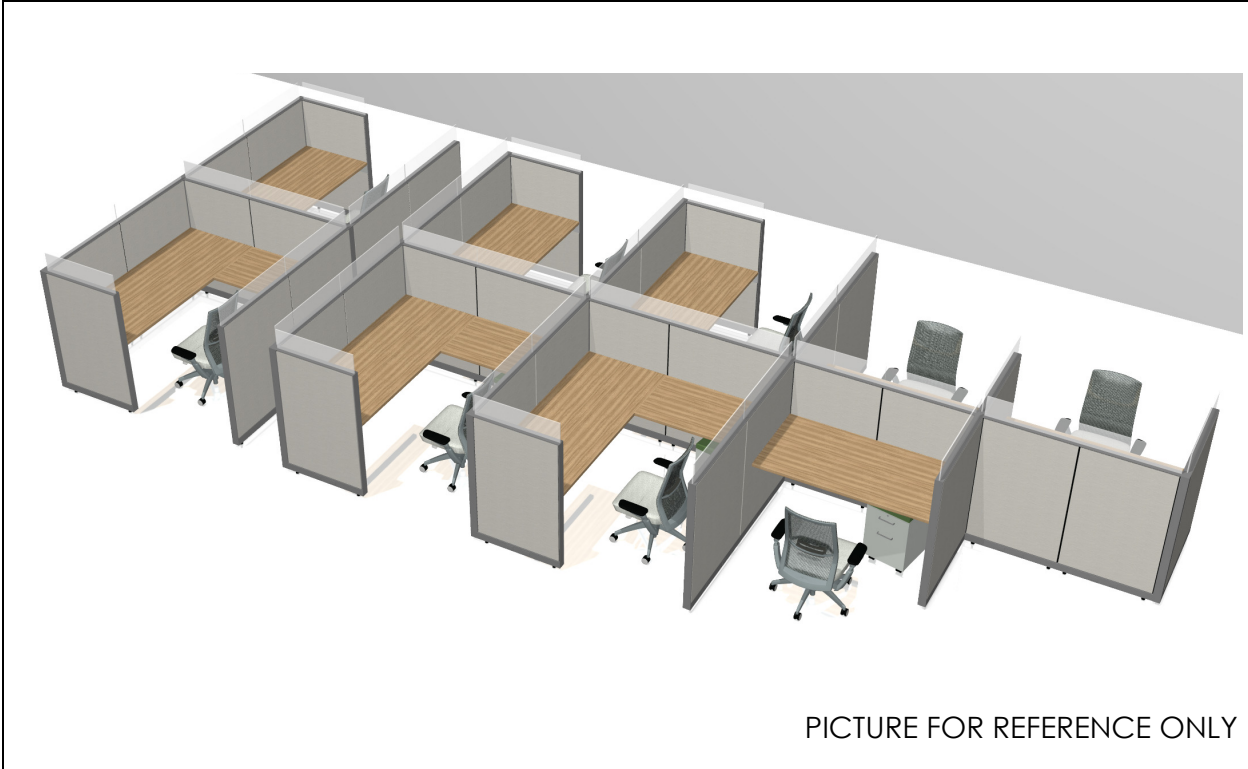
	<p>MS LOTTERY BUILDING</p>	<p>PLAN KEY WS-1B</p>
--	----------------------------	----------------------------------




PICTURE FOR REFERENCE ONLY

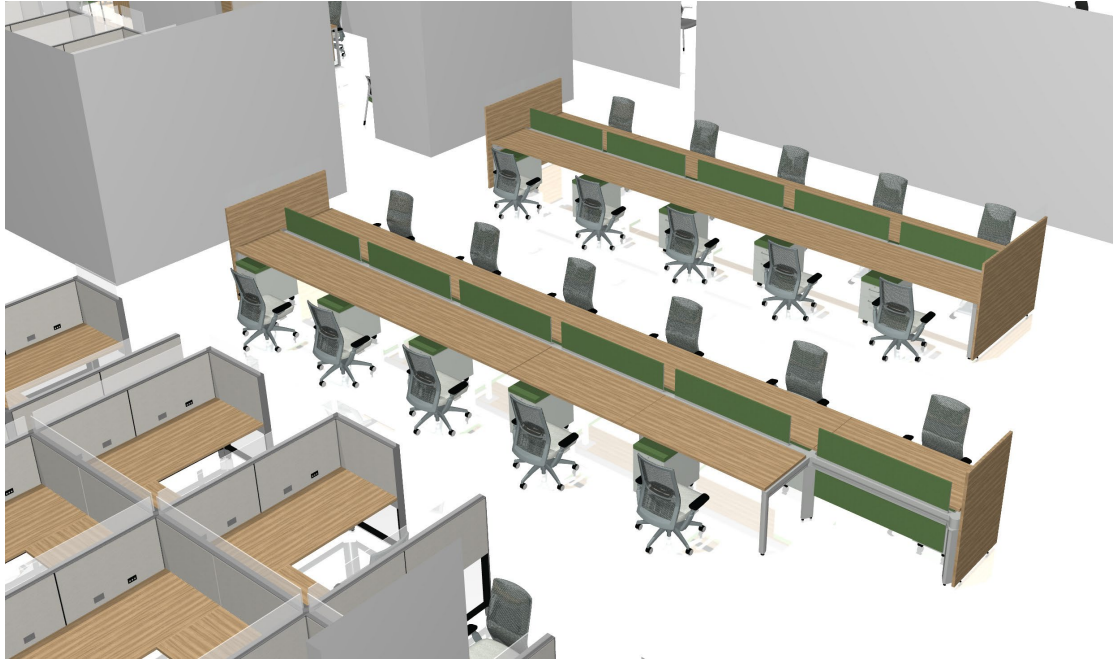
ITEM #	WS-1C
MFR MODEL #	
DESCRIPTION	ALLSTEEL TERRACE, SEE APPENDIX A AND B FOR SPEC REQUIREMENTS.
FABRIC/FINISH	PAINT GR 3 TBD; FABRIC GR 4 TBD; LAMINATE TILES GR 3 TBD; LAMINATE SURFACE GR 3 TBD; STORAGE PAINT GR 4 TBD; 50"H PANEL, WITH 7.5"H FRAMELESS FROSTED GLASS STACKER, 4 DUPLEX RECEPTACLES PER STATION, 1 FOUR PORT DATA FACEPLATE PER STATION, BASE INFEED.
PRICE EACH	
MANUFACTURER	ALLSTEEL

	<p>MS LOTTERY BUILDING</p>	<p>PLAN KEY WS-1C</p>
--	----------------------------	----------------------------------



ITEM #	WS-2
MFR MODEL #	
DESCRIPTION	ALLSTEEL TERRACE, APPENDIX A AND B FOR SPEC REQUIREMENTS.
FABRIC/FINISH	PAINT GR 3 TBD; FABRIC GR 4 TBD; LAMINATE TILES GR 3 TBD; LAMINATE SURFACE GR 3 TBD; STORAGE PAINT GR 4 TBD; 65"H PANEL, FLAT TOP CAP, 4 DUPLEX RECEPTACLES PER STATION, 1 FOUR PORT DATA FACEPLATE PER STATION, BASE INFEED.
PRICE EACH	
MANUFACTURER	ALLSTEEL

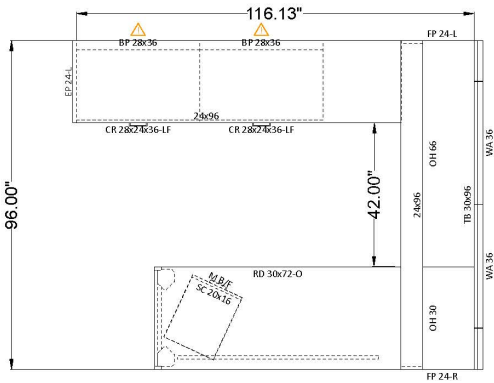
	MS LOTTERY BUILDING	PLAN KEY WS-2
---	---------------------	-----------------------------



PICTURE FOR REFERENCE ONLY

ITEM #	WS-3
MFR MODEL #	
DESCRIPTION	ALLSTEEL FURTHER, SEE APPENDIX A AND B FOR SPEC REQUIREMENTS.
FABRIC/FINISH	PAINTE GR 3 TBD; FABRIC GR 4 TBD; LAMINATE TILES GR 3 TBD; LAMINATE SURFACE GR 3 TBD; STORAGE PAINT GR 4 TBD; 13.5" BEAM MOUNTED SCREENS, LAMINATE GALLERY SCREENS W/ FROSTED GLASS TOPPERS, 4 DUPLEX RECEPTACLES PER STATION, 1 FOUR PORT DATA FACEPLATE PER STATION, BASE INFEEED, WIRE MANAGEMENT REQUIRED.
PRICE EACH	
MANUFACTURER	ALLSTEEL

	<p>MS LOTTERY BUILDING</p>	<p>PLAN KEY WS-3</p>
--	----------------------------	---------------------------------



PICTURE FOR REFERENCE ONLY

ITEM #	PO-1
MFR MODEL #	
DESCRIPTION	ALLSTEEL APPROACH SEE APPENDIX A AND B FOR SPEC REQUIREMENTS.
FABRIC/FINISH	GR 3 LAMINATE TBD; GR 3 PAINT TBD; GR 8 FABRIC TBD
PRICE EACH	
MANUFACTURER	ALLSTEEL

	<p>MS LOTTERY BUILDING</p>	<p>PLAN KEY PO-1</p>
--	----------------------------	---------------------------------



PICTURE FOR REFERENCE ONLY

ITEM #	PO-2
MFR MODEL #	
DESCRIPTION	ALLSTEEL APPROACH SEE APPENDIX A & B FOR SPEC REQUIREMENTS.
FABRIC/FINISH	GR 3 LAMINATE TBD; GR 3 PAINT TBD; GR 8 FABRIC TBD
PRICE EACH	
MANUFACTURER	ALLSTEEL

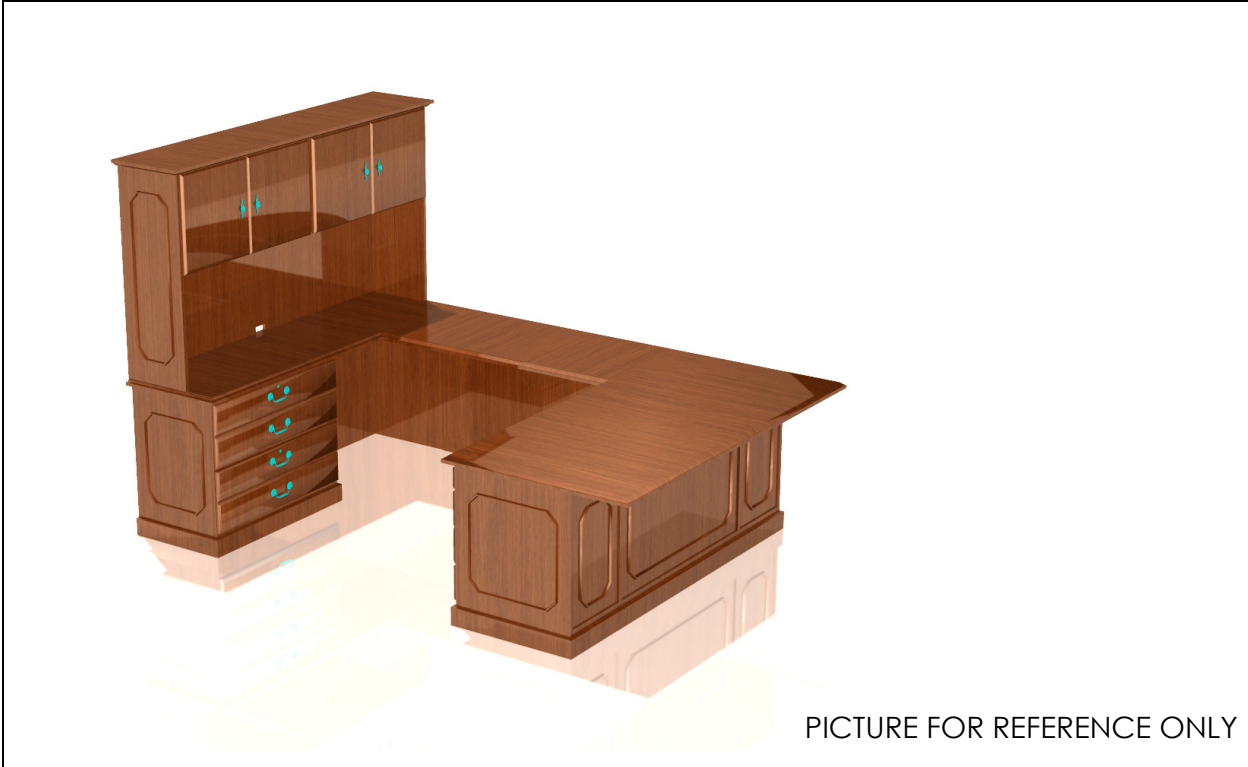
	MS LOTTERY BUILDING	PLAN KEY
		PO-2



PICTURE FOR REFERENCE ONLY

ITEM #	PO-3
MFR MODEL #	36-2072LL, 36-2450UF, 36-3672RP
DESCRIPTION	INDIANA WELLINGTON SEE APPENDIX A AND B FOR SPEC REQUIREMENTS.
FABRIC/FINISH	LAMINATE TBD
PRICE EACH	
MANUFACTURER	INDIANA - NO ALTERNATES ACCEPTED

	<p>MS LOTTERY BUILDING</p>	<p>PLAN KEY PO-3</p>
--	----------------------------	---------------------------------



PICTURE FOR REFERENCE ONLY

ITEM #	PO-4
MFR MODEL #	36-2072LL, 36-2450UF, 36-3672RP, 36-1572HU, TB-3672H, TL-0848
DESCRIPTION	INDIANA WELLINGTON SEE APPENDIX A AND B FOR SPEC REQUIREMENTS.
FABRIC/FINISH	LAMINATE TBD GRADE 4 TACKBOARD FABRIC TBD
PRICE EACH	
MANUFACTURER	INDIANA - NO ALTERNATES ACCEPTED

	<p>MS LOTTERY BUILDING</p>	<p>PLAN KEY PO-4</p>
--	----------------------------	---------------------------------



PICTURE FOR REFERENCE ONLY

ITEM #	M-1
MFR MODEL #	92-4848VB
DESCRIPTION	INDIANA VISUAL PRESENTATION BOARD APPENDIX A AND B FOR SPEC REQUIREMENTS.
FABRIC/FINISH	PREMIUM VENEER VINISH TBD TACKBOARD FABRIC GR 6 TBD
PRICE EACH	
MANUFACTURER	INDIANA - NO ALTERNATES ACCEPTED

	<p>MS LOTTERY BUILDING</p>	<p>PLAN KEY</p> <p>M-1</p>
--	----------------------------	-----------------------------------



PICTURE FOR REFERENCE ONLY

ITEM #	S-1
MFR MODEL #	92-2472BFD
DESCRIPTION	INDIANA AURA CONFERENCE BUFFET CREDENZA. 72W X 24D X 36H SEE APPENDIZ B FOR SPEC REQUIREMENTS.
FABRIC/FINISH	LAMIANTE FINISH TBD
PRICE EACH	
MANUFACTURER	INDIANA - NO ALTERNATES ACCEPTED

	<p>MS LOTTERY BUILDING</p>	<p>PLAN KEY</p> <p>S-1</p>
--	----------------------------	-----------------------------------



PICTURE FOR REFERENCE ONLY

ITEM #	S-2
MFR MODEL #	
DESCRIPTION	ALLSTEEL ESSENTIALS LATERAL FILE. 36"W X FOUR DRAWER HIGH. METAL. MUST LOCK. MUST GIVE CUSTOMER KEY ALIKE OPTION. SEE APPENDIX B FOR SPEC INFORMATION.
FABRIC/FINISH	PAINT GRADE 2 FINISH TBD
PRICE EACH	
MANUFACTURER	ALLSTEEL

	<p>MS LOTTERY BUILDING</p>	<p>PLAN KEY</p>
		<p>S-2</p>



PICTURE FOR REFERENCE ONLY

ITEM #	S-3
MFR MODEL #	
DESCRIPTION	ALLSTEEL ESSENTIALS LATERAL FILE. 42"W X FOUR DRAWER HIGH. METAL. MUST LOCK. MUST GIVE CUSTOMER KEY ALIKE OPTION. SQUARE PULL. SEE APPENDIX B FOR SPEC INFO.
FABRIC/FINISH	PAINT GRADE 2 FINISH TBD
PRICE EACH	
MANUFACTURER	ALLSTEEL

	<p>MS LOTTERY BUILDING</p>	<p>PLAN KEY</p> <p>S-3</p>
--	----------------------------	----------------------------



PICTURE FOR REFERENCE ONLY

ITEM #	S-4
MFR MODEL #	36-2036L4
DESCRIPTION	Four Drawer Lateral File, 36"W x 20-7/16"D x 52-7/8"H - SEE APPENDIX B FOR SPEC INFO.
FABRIC/FINISH	HPL LAMINATE FINISH TBD
PRICE EACH	
MANUFACTURER	INDIANA - NO ALTERNATES ACCEPTED

	<p>MS LOTTERY BUILDING</p>	<p>PLAN KEY</p>
		<p>S-4</p>



PICTURE FOR REFERENCE ONLY

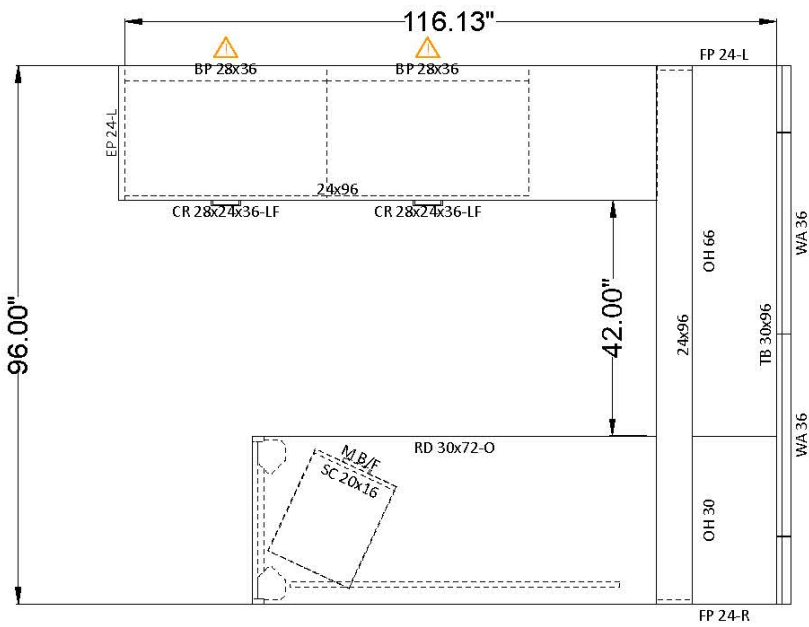
ITEM #	S-5
MFR MODEL #	36-3470BC
DESCRIPTION	Open Bookcase, 34"W x 15-1/2"D x 68-9/16"H - laminate - SEE APPENDIX A & B FOR SPEC INFO
FABRIC/FINISH	LAMINATE FINISH TBD
PRICE EACH	
MANUFACTURER	INDIANA -NO ALTERNATES ACCEPTED

	<p>MS LOTTERY BUILDING</p>	<p>PLAN KEY</p> <p>S-5</p>
--	----------------------------	-----------------------------------



ALLSTEEL APPROACH

- 2, 24D X 36W LOCKING LATERAL FILES
- 1, 20X16 MOBILE BOX/FILE WITH CUSHION TOP
- 1, 30X15 HINGE DOOR OVERHEAD - WALL MOUNTED
- 1, 66X15 HINGE DOOR OVERHEAD - WALL MOUNTED
- 1, 96X30 TACKBOARD - WALL MOUNTED
- MAIN DESK OPEN LEG SUPPORT WITH MODESTY
- BRIDGE REQUIRES WIRE ACCESS MODESTY SUPPORT
- SEE ABOVE FOR WORKSURFACE DIMENSIONS



MS LOTTERY BUILDING


PLAN KEY
PO-1

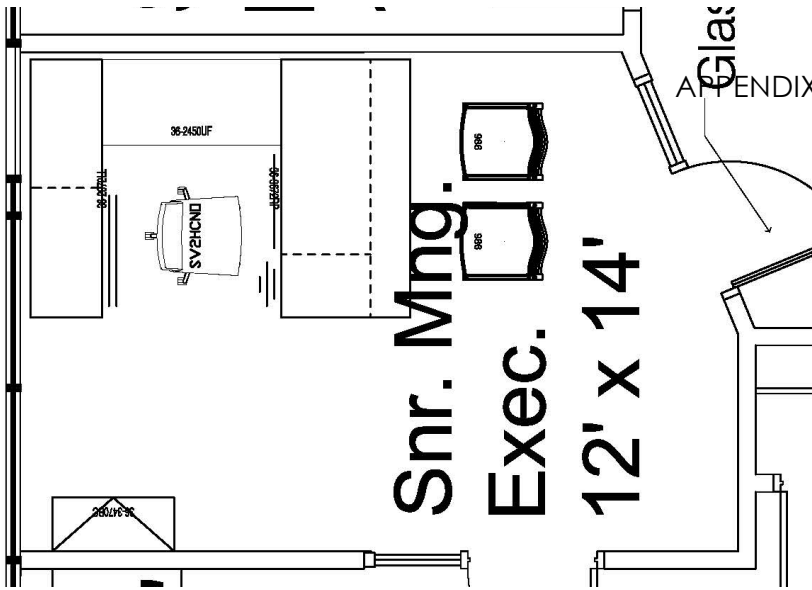


ALLSTEEL APPROACH



- ✕ 1, 24D X 36W LOCKING LATERAL FILES
- 1, 20X16 MOBILE BOX/FILE WITH CUSHION TOP
- 1, 78X15 HINGE DOOR OVERHEAD -WALL MOUNTED
- 1, 78X30 TACKBOARD - WALL MOUNTED
- MAIN DESK OPEN LEG SUPPORT WITH MODESTY
- BRIDGE REQUIRES WIRE ACCESS MODESTY SUPPORT
- SEE ABOVE FOR WORKSURFACE DIMENSIONS

	<p>MS LOTTERY BUILDING</p>	<p>PLAN KEY</p> <p>PO-2</p>
---	----------------------------	-----------------------------



ALLSTEEL APPROACH

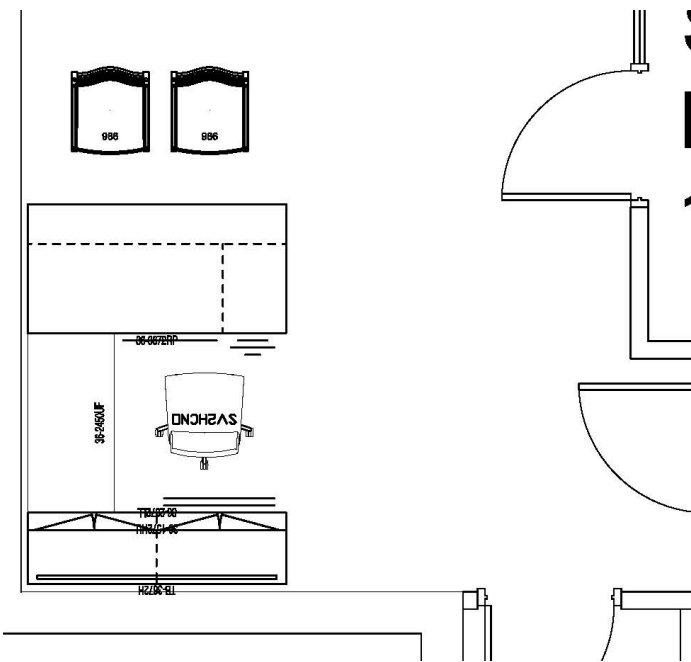
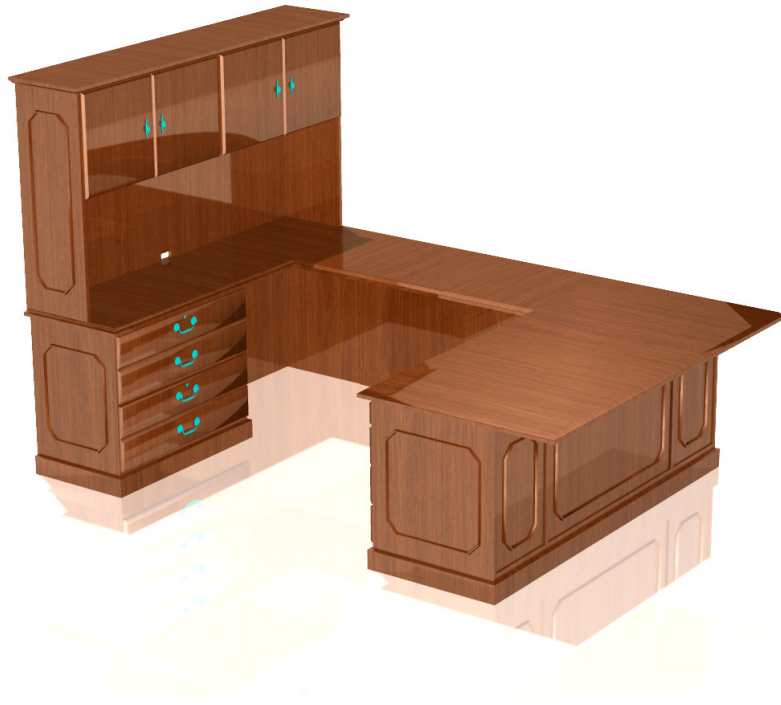
- APPENDIX A
- 1, 24D X 36W LOCKING LATERAL FILES
 - 1, 20X16 MOBILE BOX/FILE WITH CUSHION TOP
 - 1, 78X15 HINGE DOOR OVERHEAD - WALL MOUNTED
 - 1, 78X30 TACKBOARD - WALL MOUNTED
 - MAIN DESK OPEN LEG SUPPORT WITH MODESTY
 - BRIDGE REQUIRES WIRE ACCESS MODESTY SUPPORT
 - SEE ABOVE FOR WORKSURFACE DIMENSIONS



MS LOTTERY BUILDING

PLAN KEY

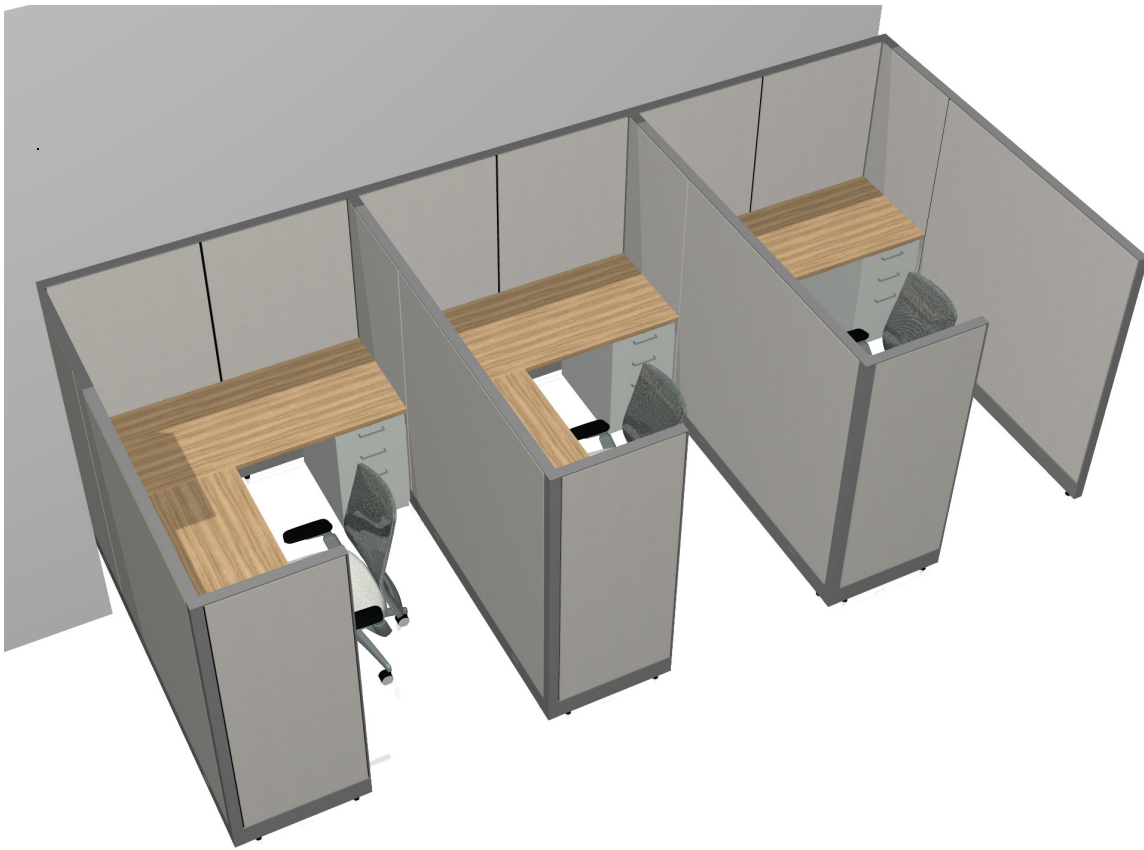
PO-3



INDIANA WILMINGTON


- 1, 24D X 36W LOCKING LATERAL FILES
- 1, BOX/BOX/FILE
- 1, 78W HINGE DOOR HUTCH
- 1, 78 TACKBOARD
- 1, FOUR DRAWER LATERAL FILE 36W X 20D X 52H

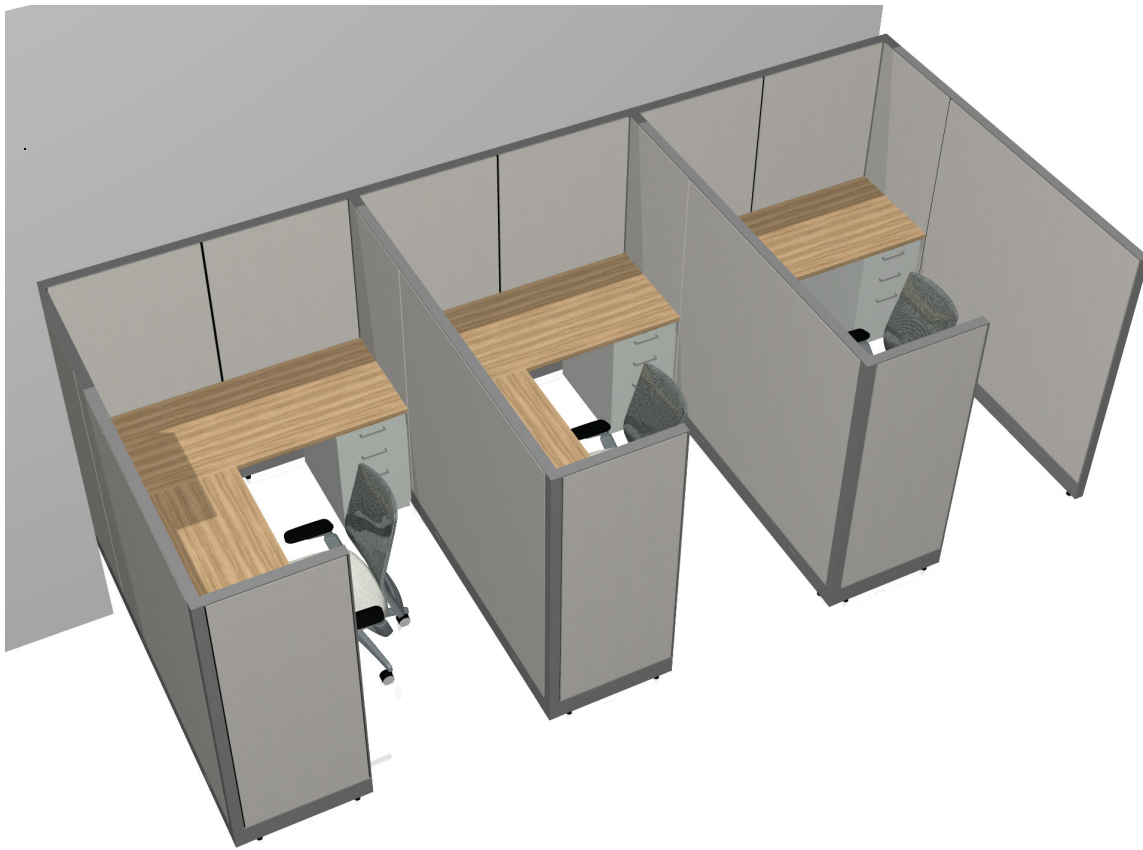
	<p>MS LOTTERY BUILDING</p>	<p>PLAN KEY PO-4</p>
--	----------------------------	---------------------------------



ALLSTEEL TERRACE


- GENERAL NOTE: CONFIGURATIONS MAY VARY. DEALER RESPONSIBLE FOR VERIFYING DRAWING FOR ACCURACY.
- SEE PLAN FOR TAGGING.
- 65"H MONOLITHIC TACKABLE PANELS
- LAMINATE EXTERIOR SKINS
- TACKABLE INTERIOR SKINS
- PAINTED TRIM - FLAT
- METAL BOX/BOX/FILE
- 4 DUPLEX RECEPTACLES PER USER
- 1 FOUR PORT DATA JACK PER USER
- INCLUDE ALL NECESSARY INFEEDS AND HARNESSSES FOR EACH RUN OF STATIONS

	<p>MS LOTTERY BUILDING</p>	<p>PLAN KEY</p> <p>WS-1</p>
---	----------------------------	-----------------------------



ALLSTEEL TERRACE


- GENERAL NOTE: CONFIGURATIONS MAY VARY. DEALER RESPONSIBLE FOR VERIFYING DRAWING FOR ACCURACY.
- SEE PLAN FOR TAGGING.
- 50"H MONOLITHIC TACKABLE PANELS
- LAMINATE EXTERIOR SKINS
- TACKABLE INTERIOR SKINS
- PAINTED TRIM - FLAT
- METAL BOX/BOX/FILE
- 4 DUPLEX RECEPTACLES PER USER
- 1 FOUR PORT DATA JACK PER USER
- INCLUDE ALL NECESSARY INFEEDS AND HARNESES FOR EACH RUN OF STATIONS
- LAMINATE WORKSURFACES

	<p>MS LOTTERY BUILDING</p>	<p>PLAN KEY</p> <p>WS-1A</p>
---	----------------------------	-------------------------------------



ALLSTEEL TERRACE


- GENERAL NOTE: CONFIGURATIONS MAY VARY. DEALER RESPONSIBLE FOR VERIFYING DRAWING FOR ACCURACY.
- SEE PLAN FOR TAGGING.
- 50"H MONOLITHIC TACKABLE PANELS
- LAMINATE EXTERIOR SKINS
- TACKABLE INTERIOR SKINS
- PAINTED TRIM - FLAT W/ 7.5"H FRAMELESS FROSTED GLASS STACKER
- METAL FILE/FILE
- METAL MOBILE BOX/FILE WITH FABRIC CUSHION. CUSHION FABRIC GRADE 8 TBD
- 4 DUPLEX RECEPTACLES PER USER
- 1 FOUR PORT DATA JACK PER USER
- INCLUDE ALL NECESSARY INFEEDS AND HARNESSSES FOR EACH RUN OF STATIONS
- LAMINATE WORKSURFACES

	<p>MS LOTTERY BUILDING</p>	<p>PLAN KEY</p> <p>WS-1B</p>
---	----------------------------	-------------------------------------



ALLSTEEL TERRACE


- GENERAL NOTE: CONFIGURATIONS MAY VARY. DEALER RESPONSIBLE FOR VERIFYING DRAWING FOR ACCURACY.
- SEE PLAN FOR TAGGING.
- 50"H MONOLITHIC TACKABLE PANELS
- LAMINATE EXTERIOR SKINS
- TACKABLE INTERIOR SKINS
- PAINTED TRIM - FLAT W/ 7.5"H FRAMELESS FROSTED GLASS STACKER
- METAL FILE/FILE
- METAL MOBILE BOX/FILE WITH FABRIC CUSHION. CUSHION FABRIC GRADE 8 TBD
- 4 DUPLEX RECEPTACLES PER USER
- 1 FOUR PORT DATA JACK PER USER
- INCLUDE ALL NECESSARY INFEEDS AND HARNESSSES FOR EACH RUN OF STATIONS
- LAMINATE WORKSURFACES
- 1, 12X72 TRANSACTION SURFACE

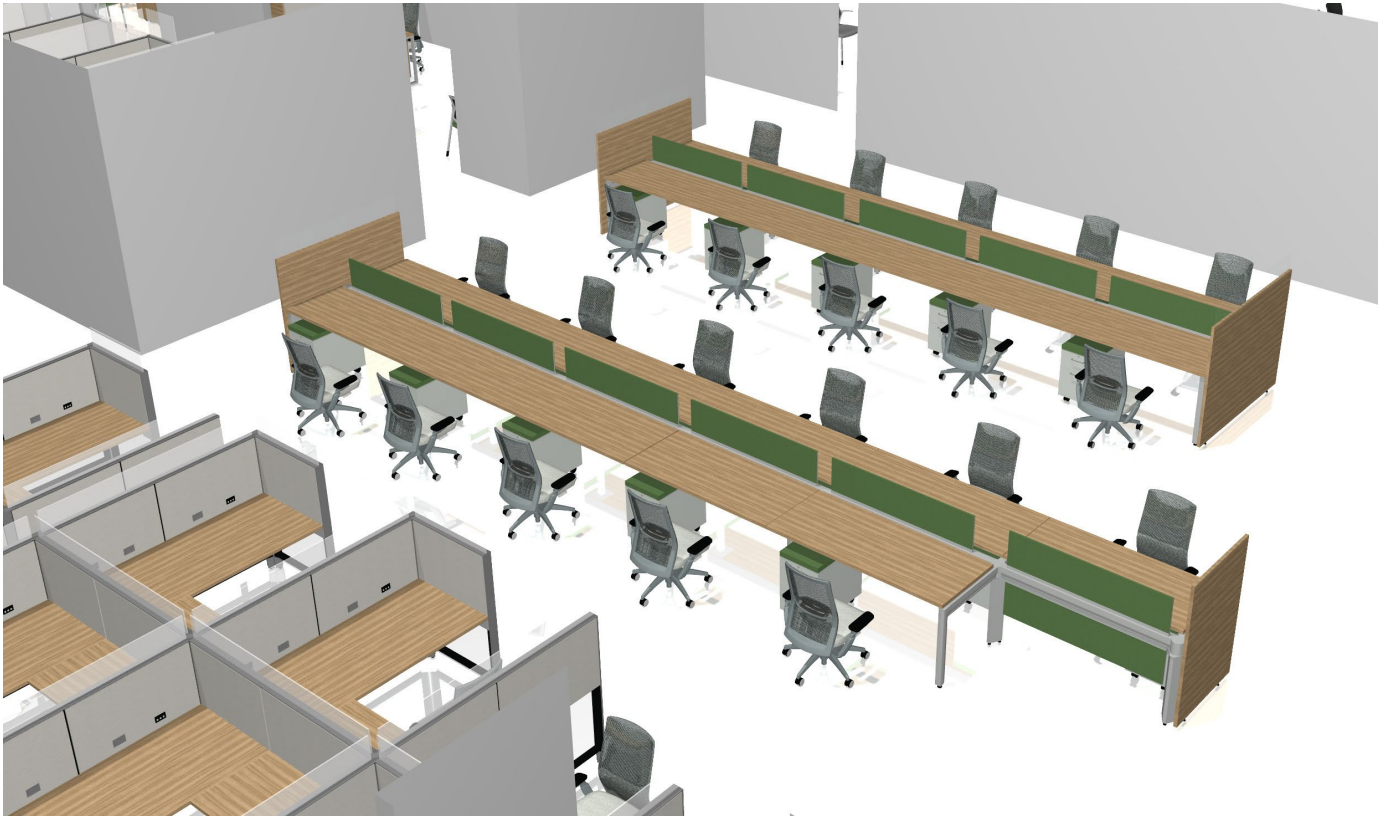
	<p>MS LOTTERY BUILDING</p>	<p>PLAN KEY</p> <p>WS-1C</p>
---	----------------------------	------------------------------



ALLSTEEL TERRACE


- SEE PLANS FOR CONFIGURATION
- SEE PLANS FOR TAGGING
- 50"H MONOLITHIC PANELS
- 7.5"H FROSTED FRAMELESS GLASS STACKER
- LAMINATE EXTERIOR SKINS
- TACKABLE INTERIOR SKINS
- PAINTED METAL TRIM - FLAT
- FOUR DUPLEX RECEPTACLES PER USER
- 1 FOUR PORT DATA JACK PER USER
- 1 METAL MOBILE BOX/FILE WITH CUSHION TOP
- LAMINATE WORKSURFACES

	<p>MS LOTTERY BUILDING</p>	<p>PLAN KEY</p> <p>WS-2</p>
---	----------------------------	------------------------------------



ALLSTEEL FURTHER

- SEE PLANS FOR CONFIGURATION
- SEE PLANS FOR TAGGING
- SEE TECH SPECS
- BENCHING SYSTEM - FIXED LAMINATE WORKSURFACES
- 13"H TACKABLE BEAM MOUNTED SCREENS
- INCLUDE BEAM MOUNTED MODESTY PANEL (AS PICTURED) FOR ONE EXPOSED STATION
- 50"H LAMINATE END PANELS W/ 7.5"H FRAMELESS FROSTED GLASS STACKER
- 1 METAL BOX/FILE WITH CUSHION TOP PER USER
- HIGH CAPACITY WIRE MANAGEMENT (ONE PER USER)
- FOUR DUPLEX RECEPTACLES PER USER
- 1 FOUR PORT DATA JACK PER USER

	<p>MS LOTTERY BUILDING</p>	<p>PLAN KEY</p> <p>WS-3</p>
---	----------------------------	------------------------------------

T-4 | AURA CONFERENCE



Indiana

FURNITURE

1224 Mill Street
 PO Box 270
 Jasper, Indiana 47547-0270
 P: 800.422.5727
 Sales@IndianaFurniture.com

Veneer

- Chassis surfaces and veneer tops are select grade cherry, maple, oak, walnut or premium veneer
- Drawer fronts are 3-ply construction and $\frac{3}{4}$ " thick with vertically matched grain
- Select grain patterns are used to maintain consistency and proper balance between units

Tops

- Veneer tops are $1\frac{3}{16}$ " thick and feature 5-ply balanced construction
- Laminate tops are $1\frac{3}{16}$ " thick and feature 3-ply balanced construction
- Conference Tops are shaped on all four sides for complete design appeal
- Storage components are shaped on the front edge only for a flush fit
- Data and wire management is available

Drawers & Suspensions

- Drawer sides and backs are $\frac{7}{16}$ " thick hardwood
- Box and File drawer have $\frac{5}{32}$ " thick hardboard bottoms
- 36" Lateral Files drawers have $\frac{1}{4}$ " thick hardboard bottoms for storage applications
- Drawers feature 5-sided construction for easy removal of drawer fronts
- High quality suspensions with a lifetime warranty
- Box and file drawers are full extension, progressive slides
- Positive cushioned start/stops and steel ball bearings to ensure a smooth ride
- Storage cabinets provide legal filing front to back and legal or letter filing side to side
- Operational load capacities for lateral files are 85.8# for functional loading and 131.2# for proof loading

Locking

- Video and storage/wardrobe units with drawers feature locking
- All units ship randomly keyed as standard or can be keyed alike at no additional charge
- Removable lock cores for re-keying

Assembly

- Tops and end panels are securely fastened using high quality fastening systems to assure maximum strength
- Heavy-duty adjustable glides ensure proper leveling and compensate for uneven floors

Finish

- Indiana Furniture features a *UV Advantage*® finish that is made to last and preserves the clarity of our products and earns LEED Credit 4.5 for low-emitting materials
- Unique UV matte finish
- Choose from 15 veneer finishes or 8 laminate finishes

Edge Options

- Choose from 9 edge options – Bevel, Bullnose, Radius, Waterfall, Square, Flute, Phoenix, Tail, and Tri-Round

Pull Options

- Choose from 16 pulls in aluminum or black finish – Arch, Waterfall, Bar, Elite, Bow Tie, Comet, Quadra, Bullet, Curved, Arc, Orbit, Buckle, Groove, Beam, Swag, and Focus

Warranty & Certifications

- 12-Year Limited Liability Warranty
- ANSI/BIFMA X5.5-2008 and X5.9-2004
- BIFMA level 2 Certified
- ETL Environmental Certification

Allsteel®

Limited Lifetime Warranty

Our unwavering commitment to our customers compels us to care, and our dedication to quality is just one of the ways we show our customers how much they mean to us.

We recognize that keeping up with the pace of change requires having products that work as hard as the people who use them. That's why each of our products is rigorously tested and certified to meet the highest industry standards.

In the unlikely event that any Allsteel product or component covered by the Allsteel Warranty should fail under normal workplace use because of defective material or workmanship, Allsteel promises to fix it.

Because taking care of *people* is how Allsteel takes care of business.

Limited Lifetime Warranty

Allsteel warrants its products to be free from defects in material and workmanship for as long as the original purchaser owns them, except as set forth below.

Allsteel shall repair or replace with comparable product (at Allsteel's discretion), free of charge, any Allsteel product or component manufactured after January 17, 2019, that fails under normal commercial office use, in accordance with the terms of this warranty. For products or components manufactured prior to this date, please contact your Allsteel dealer for warranty information.

The materials and components listed below are covered according to the following schedule from the date of invoice:

LIFETIME

All Allsteel products, materials, and components are covered under the Allsteel Limited Lifetime Warranty, subject to the following exceptions.

12 YEARS

Veneer and laminate surfaces; wood seating; electrical components; seating controls; pneumatic cylinders; glides; casters; arm caps; foam; polymer side chair shells

10 YEARS

Beyond® and Aspect™ demountable partitions; painted wood surfaces; wood-frame seating and lounge products

7 YEARS

Altitude® A5 and Altitude® A8 height-adjustable worksurface mechanisms

5 YEARS

Altitude® A3 height-adjustable worksurface mechanisms; tablet arm mechanisms; mesh on Quip™, Scout®, and Mimeo®; panel and seating upholstery fabrics; other covering materials; upholstery on tackboards and storage cushions; freestanding LED task lights; Beyond® and Aspect™ moving parts such as door hardware and door mechanisms; monitor arms; keyboard trays

3 YEARS

Marker board surfaces; upholstery on lounge products; undercabinet LED lights; USB power modules

2 YEARS

Keyless electronic locks

1 YEAR

Traceless laminates

Allsteel does not warrant:

- Customer's Own Materials (COM) or Customer's Own Laminates (COL)
- Natural variations occurring in wood, leather, or other natural materials, which are inherent to their character and not considered defects
- Colorfastness of textiles or surface finishes
- Matching of colors, grains, textures, or edge bands to natural materials such as veneer and leather
- Damage caused by the carrier in-transit or installer
- Products not installed, used, or maintained in accordance with product specifications, instructions, and warnings
- Modifications or attachments to the product not approved by Allsteel
- Products used for rental purposes
- Beyond® and Aspect™ doors used in suite entry applications
- Beyond® and Aspect™ customer's own hardware, which is subject to the supplier warranty
- Third-party products acquired through the Tailored Products Group
- Partner (e.g. Normann Copenhagen), third-party, and other manufacturers' products – Allsteel, to the extent possible, will pass through any warranty received with respect to other manufacturers' branded products
- Consumables (e.g. batteries, bulbs, lamps, and ballasts)

This warranty applies only to the original purchaser and is non-transferrable.

Warranty is void if integrated components or features are substituted with non-Allsteel or unauthorized components without previous authorization.

This warranty will not be valid if damage to the product is caused by (1) normal wear and tear over the course of ownership, including puddling and pilling in materials; (2) sharp objects (e.g. writing utensils, heeled shoes, scissors, jewelry, keys); (3) extreme environmental conditions; (4) unintended usage or; (5) the use or storage of product in unsuitable environments or conditions.

This warranty applies only to products purchased from authorized Allsteel dealers and delivered within the United States and Canada. This warranty is valid for unlimited shift usage. Please contact your Allsteel dealer with any warranty requests.

To the extent allowed by law, Allsteel makes no other warranty, express or implied, including any warranty of merchantability or fitness for a particular purpose. Allsteel will not be liable for any consequential or incidental damages.

Allsteel®



Aware®

Tables

The Aware collection is a mobile solution that includes tables, boards, lecterns, and credenzas.

Features

- Multiple table shapes
- Glides or casters
- Nesting top option

Aware Tables Statement of Line



Nesting and Fixed Tables with T-Legs

Rectangle	18", 24", 30", 36"D x 36", 42", 48", 54", 60", 66", 72", 84", 96"W
Trapezoid	24"D x 60"W
Crescent	30"D x 85"W
Polygon	30"D x 66"W
Half-Round	24", 30", 36"D x 48", 60", 72"W

Nesting and Fixed Tables with V-Legs

Rectangle	24" and 30"D x 36", 42", 48", 54", 60", 66", 72", 84", 96"W
Trapezoid	30"D x 72"W
Crescent	24"D x 70"W
Polygon	24"D x 55"W
Half-Round	24" and 30"D x 48" and 60"W

Power cutout is available on rectangle tops.

Laminate Top Finishes

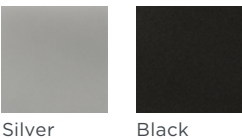


Leg Finishes



*Not available in polished aluminum.

Caster Colors



Allsteel Inc.
Muscatine, Iowa 52761
allsteeloffice.com

©2017 Allsteel Inc.
Allsteel and Aware are registered trademarks.
Form # A8445.A1 (02/17)

Allsteel®



Nimble®

Multi-Purpose Chair

Nimble is a multi-purpose chair that features three frame finishes and eight shell colors.

Features

Lightweight
Gang with optional bracket
Stackable

Nimble Multi-Purpose Chair Statement of Line



Overall	31½"H x 19¾"W x 21½"D
Seat	18"H x 18"W x 17½"D
Back	16½"H x 19"W
Storage	36 chairs stacked on cart height 66" 12 chairs stacked on floor height 40"

Nimble stacking cart and ganging brackets also available.

Shell Colors



White



Summit



Surf



Sprout



Tangelo



Cayenne



Brownstone



Black

Frame Finishes



Chrome



Silver



Black

Allsteel®

Allsteel Inc.
Muscatine, Iowa 52761
allsteeloffice.com

©2017 Allsteel Inc.
Allsteel and Nimble are registered trademarks.
Form # A8470.A1 (06/17)

Although the colors reproduced on this card were matched with care, they may vary from the actual finish. When color is critical, please obtain a physical sample.

C-3 | EVO CONFERENCE

Allsteel®

**Evo™****Conference Chair**

Designed in partnership with Bruce Field, Evo is a comprehensive family of seating that includes task chairs and stools, conference chairs, and side chairs.

Features

Upholstered mid-back
Arm options
Weight-activated control

C-3 | EVO CONFERENCE

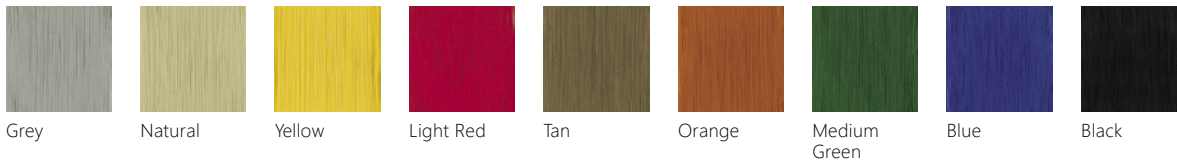
Evo Conference Chair Statement of Line



Overall	35"-40"H x 26"W x 26"D
Seat	16¼"-21¼"H x 20"W x 16"-18¾"D
Back	20¾"H x 17"W
Adjustable Arms	6⅝"-11"H x 12½"-21"W (3" depth range)
Polished Fixed Arms	8⅝"H x 20"W x 9½"D

Armless model also available.

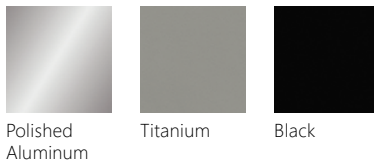
Accent Seat/Back Stitch Colors



Coordinating stitch also available.

A wide selection of seating upholsteries is available online at allsteeloffice.com.

Base/Frame Finishes



Polished
Aluminum

Titanium

Black

Allsteel®

Allsteel Inc.
Muscatine, Iowa 52761
allsteeloffice.com

©2018 Allsteel Inc.
Allsteel is a registered trademark and
Evo is a trademark.

Form # A8541.A1 (06/18)

Although the colors reproduced on this card were matched with care, they may vary from the actual finish. When color is critical, please obtain a physical sample.

C-2 | EVO SIDE CHAIR

Allsteel®

**Evo™****Side Chair**

Designed in partnership with Bruce Field, Evo is a comprehensive family of seating that includes task chairs and stools, conference chairs, and side chairs.

Features

Mesh back
Casters or glides

C-2 | EVO SIDE CHAIR

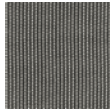
Evo Side Chair Statement of Line

**Casters****Glides**

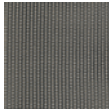
Overall	32¾"H x 22¼"W x 23¼"D
Seat	18½"H x 18½"W x 16¼"D
Back	17¾"H x 16¼"W
Fixed Arms	9"H x 19½"W x 7"D

Mesh Back Colors

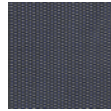
Lustre



Mist



Clay



Navy



Dusk

A wide selection of seating upholsteries is available online at allsteeloffice.com.

Frame Colors

Silver



Black

Allsteel®

Allsteel Inc.
Muscatine, Iowa 52761
allsteeloffice.com

©2018 Allsteel Inc.
Allsteel is a registered trademark and
Evo is a trademark.

Form # A8544.A1 (06/18)

Although the colors reproduced on this card were matched with care, they may vary from the actual finish. When color is critical, please obtain a physical sample.

C-1 & C-3 | EVO TASK CHAIR

Allsteel®



Evo™

Task Chair & Task Stool

Designed in partnership with Bruce Field, Evo is a comprehensive family of seating that includes task chairs and stools, conference chairs, and side chairs.

Features

- Mesh high-back
- Arm options
- Weight-activated control

C-1 & C-3 | EVO TASK CHAIR

Evo Task Chair & Task Stool Statement of Line



Task Chair

Overall	38½"-43½"H x 26"W x 26"D
Seat	16¼"-21¼"H x 20"W x 15½"-18¼"D
Back	24"H x 16½"W
Adjustable Arms	6⅝"-11"H x 12½"-21"W (3" depth range)
Polished Fixed Arms	8⅝"H x 20"W x 9½"D

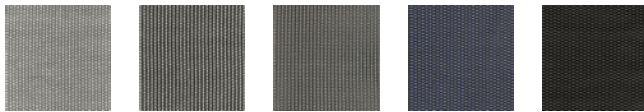
Armless models also available for task chair and task stool.



Task Stool

Overall	46"-56"H x 26"W x 26"D
Seat	23¾"-33⅝"H x 20"W x 15½"-18¼"D
Back	24"H x 16½"W
Adjustable Arms	6⅝"-11"H x 12½"-21"W (3" depth range)
Polished Fixed Arms	8⅝"H x 20"W x 9½"D

Mesh Back Colors



Lustre Mist Clay Navy Dusk

Accent Seat Stitch Colors



Grey Natural Yellow Light Red Tan Orange Medium Green Blue Black

Coordinating stitch also available.

A wide selection of seating upholstery is available online at allsteeloffice.com.

Base/Frame Finishes



Polished Aluminum Titanium Black



Allsteel Inc.
Muscatine, Iowa 52761
allsteeloffice.com

©2018 Allsteel Inc.
Allsteel is a registered trademark and
Evo is a trademark.

Form # A8540.A1 (06/18)

Although the colors reproduced on this card were matched with care, they may vary from the actual finish. When color is critical, please obtain a physical sample.

T-3 | COMMUNITY TABLE

Allsteel®



Community

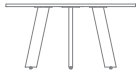
As part of the Gather™ collection, Community is a seated-height collaborative or meeting table.

Features

- Three table shapes
- Several size options
- Power access

T-3 | COMMUNITY TABLE

Community Statement of Line



Seated

29"H



Tabletops

Round 54", 60", 66" dia.

Square 54", 60", 66"

Rectangle Widths 36", 42", 48"

Rectangle Lengths 60", 72", 84", 96", 120", 144", 168"

144"L and 168"L rectangle tops are limited to solid-color laminate finishes. Centered powered cutout is available on all tops (two for 120"L, 144"L, and 168"L rectangle tops).

Laminate Top Finishes



Frosty White



Loft



Muslin



Bungalow



Brownstone



Flint



Phantom Ecu



Beigewood



Natural Maple



Fawn Cypress



Natural Recon



Brazilwood



Branded Oak



Portico Teak



Phantom Charcoal



Amber Cherry



Lowell Ash



Mangalore Mango



Shaker Cherry



Skyline Walnut



Columbian Walnut



Ebony Recon

Veneer Top Finishes



Clear Maple



Clear Oak



Wheat Cherry



Light Cherry



Light Walnut



Burnished Cherry



Coffee Walnut



Dark Roast Walnut



Dark Rift Oak

Leg Colors



Brilliant White



Loft



Muslin



Bungalow



Brownstone



Flint



Black



Silver



Platinum Metallic



Champagne Metallic



Gunmetal Metallic



Allsteel Inc.
Muscatine, Iowa 52761
allsteeloffice.com

©2017 Allsteel Inc.
Allsteel is a registered trademark and Gather is a trademark.
Form # A8432.A1 (02/17)

C-6 | VICINITY

Allsteel®



Vicinity™

Seating

As part of the Gather™ collection, Vicinity is a coordinated offering of multi-use seating and tables.

Features

- Multiple chair styles
- Several shell finishes
- Stackable

Four Leg

Overall 31"H x 24"W x 21½"D

Seat 17⅞"H

Shell Colors



White



Zest



Calypso



Cherry



Titanium



Brownstone



Regatta



Lava

Frame Finishes



Brilliant
White



Chrome



Silver



Pyrite



Bullseye



Flint



Black

Allsteel®



Vicinity™

Tables

As part of the Gather™ collection, Vicinity is a coordinated offering of multi-use seating and tables.

Features

- Multiple height options
- Optional foot ring
- Power access

Vicinity Tables Statement of Line



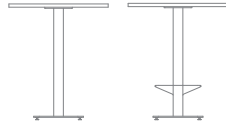
Seated

29"H



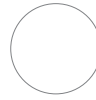
Counter

36"H



Cafe

42"H



Tabletops

Round 30", 36", 42", 48" dia.

Square 30", 36", 42", 48"

Centered power cutout is available on all tops.

Laminate Top Finishes



Frosty White



Loft



Muslin



Bungalow



Brownstone



Flint



Phantom Ecru



Beigewood



Natural Maple



Fawn Cypress



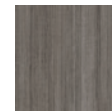
Natural Recon



Brazilwood



Branded Oak



Portico Teak



Phantom Charcoal



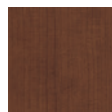
Amber Cherry



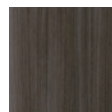
Lowell Ash



Mangalore Mango



Shaker Cherry



Skyline Walnut



Columbian Walnut



Ebony Recon

Base Finishes



Textured White



Chrome



Textured Silver



Textured Black

Allsteel®



Svelte

Designed in collaboration with Bill Raftery, Svelte seating delivers refined sophistication that affords users the confidence to perform, while embodying a versatility capable of maintaining consistency and modernity across functions and settings.

Features

- Fully upholstered
- Mid-back or high-back options
- Fixed or armless options

Svelte Statement of Line



High-Back Chair

High-Back	42-45½"H x 26"W x 26"D
Seat	16-19½"H x 20"W x 16¼"D
Back	29"H x 21½"W
Fixed Loop Arm	7½"H x 1½"W x 11"D



Mid-Back Chair

Mid-Back	35-39½"H x 26"W x 26"D
Seat	18½-23"H x 20"W x 14-19"D
Back	20¾"H x 18½"W
Fixed Loop Arm	7½"H x 1½"W x 11"D

Channel stitching and armless models available in both the High-Back and Mid-Back chair.

Base Finishes



Black

Polished
Aluminum

A wide selection of seating upholstery is available online at allsteeloffice.com.

Allsteel®

Allsteel Inc.
Muscatine, Iowa 52761
allsteeloffice.com

©2018 Allsteel Inc.
Allsteel is a registered trademark.
Form # A8561.A1 (09/18)

Although the colors reproduced on this card were matched with care, they may vary from the actual finish. When color is critical, please obtain a physical sample.

C- 7 | TRIFT



Indiana

FURNITURE

1224 Mill Street
 PO Box 270
 Jasper, Indiana 47547-0270
 P: 800.422.5727
 Sales@IndianaFurniture.com

Clean lines, ten styles, and beautiful hardwood frames form a versatile collection of guest seating for contemporary or traditional environments.

Construction

- Exposed frames are manufactured using European Beach and free of splits, discoloration, pits, shakes and wormholes
- All chair joints are double doweled or mortised and tenoned, screwed and glued for maximum strength and durability
- All seats feature corner blocking
- Frames are individually hand assembled and sanded prior to being finished
- Non-marring nylon glides included in each leg at floor level

Finish

- Indiana Furniture uses a multi-step hand finishing process on all exposed wood frames
- Chairs feature a catalyzed varnish finish which offers durability, lasting beauty and resistance to normal wear

Upholstery

- Seat and back poly comply with CAL 117-2013
- High grade foam is 1-1/2" thick in the seat and 1" thick in the back
- Textiles are sewn with double stitch seams
- High quality resilient sheet webbing ensures a comfortable seating application.
- A wide variety of contemporary and traditional styles in vinyl, leather and fabrics are all pre-graded for ease of use

Certifications

- ETL Environmental Certification
- BIFMA Level 2
- ANSI/BIFMA Certified

PO-3 & PO-4 | WILMINGTON



Indiana

FURNITURE

1224 Mill Street
 PO Box 270
 Jasper, Indiana 47547-0270
 P: 800.422.5727
sales@indianafurniture.com

Veneer

- Exposed surfaces are select grade American Black walnut
- Drawer fronts are 3-ply construction and $\frac{3}{4}$ " thick with vertically matched grain
- Select grain patterns are used to maintain consistency and proper balance

Tops

- Tops are 1-1/16" thick and feature 3-ply balanced construction with solid hardwood rims
- Veneer tops have mitered corners and laminate tops have butt corners
- Tops are shaped on all four sides for complete design appeal
- Grommets are available for data/wire management

Drawers

- Drawer sides and backs are 7/16" thick hardwood interiors
- Box and File drawer have 5/32" thick hardboard bottoms
- Lateral Files drawers have 1/4" thick hardboard bottoms for storage applications
- All drawers feature dovetail construction
- Interiors are sanded, sealed and finished to provide a smooth, quality feel and appearance
- High quality suspensions with a lifetime warranty
- File drawers are equipped with high quality, progressive full extension slides with precision ball bearings to ensure a smooth, quiet operation
- Tray and box drawers are equipped with $\frac{3}{4}$ extension ball bearing action slides with positive stop action
- Operational load capacities for lateral files are 64.6# for functional loading and 98.9# for proof loading

Locking

- Center drawer locking secures all desk drawers with the turn of a single key
- All units ship randomly keyed as standard or can be keyed alike at no additional charge
- Removable lock cores for re-keying

WILMINGTON - Continued

Assembly

- Pedestals are of mortised and tenoned construction with all joints securely fastened with screws, hardwoods screw rail brackets and metal brackets
- Bases are solid hardwood with mitered corners
- Heavy-duty adjustable glides ensure proper leveling and compensate for uneven floors

Finish

- The multi-step catalyzed finish process allows for distinctive grain clarity and superior resistance to normal wear and easy maintenance.
- Veneer tops are standard with a satin sheen finish
- Veneer tops are available with an optional high sheen finish
- Choose from 8 veneer finishes with HPL tops available in select colors

Edge Detail

- Wilmington is offered in a classic traditional edge

Pulls

- Wilmington units are standard with a traditional brass pull

Tasklights

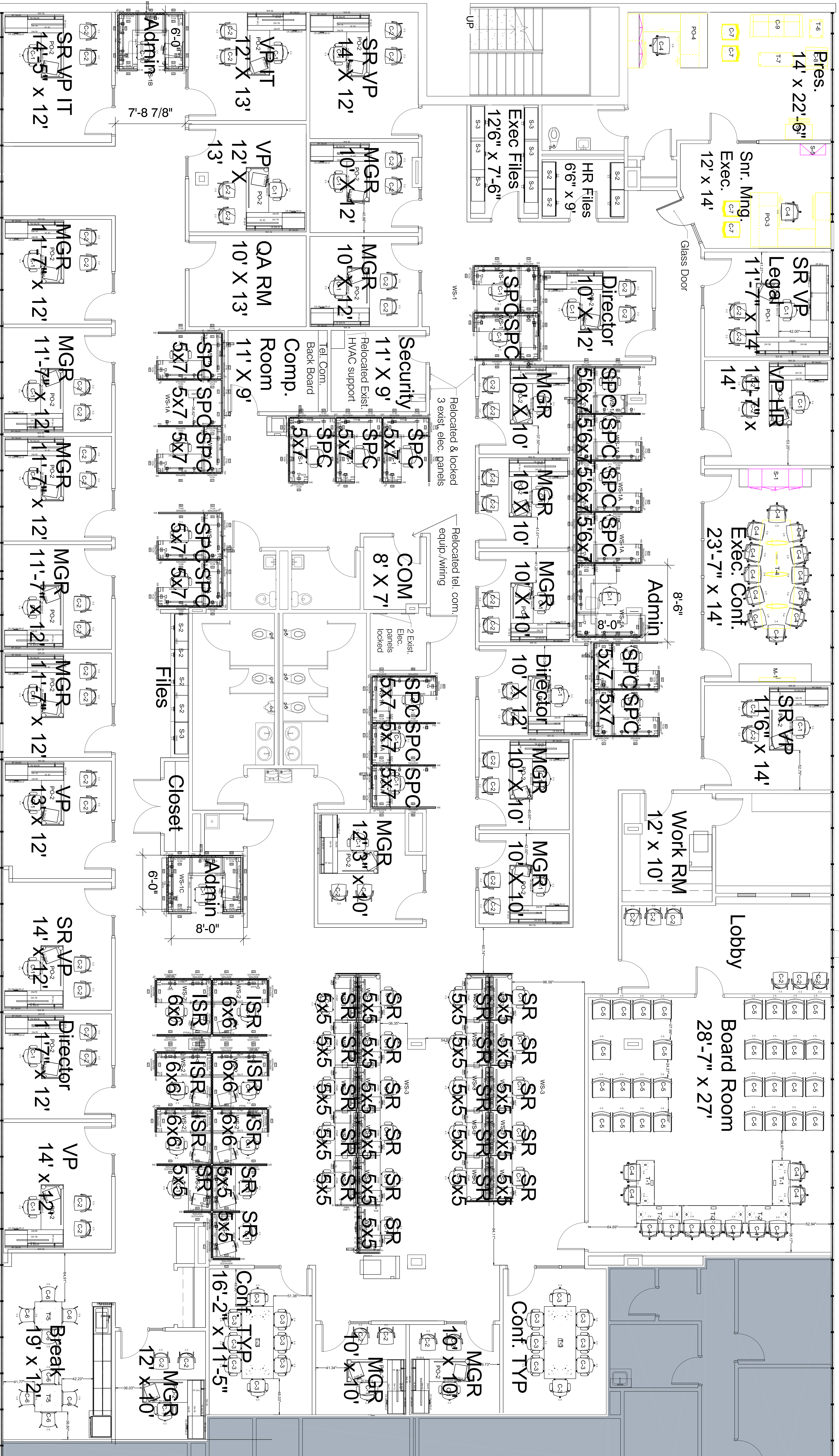
- Tasklights are available in the standard fluorescent or energy efficient LED models

Tackboards

- Tackboards available in a wide variety of fabric selections for all hutch sizes including Momentum, Maharam, Mayer, and CF Stinson as well as others

Warranty & Certifications

- 12-year Limited Liability Warranty
- ANSI/BIFMA X5.5-2008 and X5.9-2004
- BIFMA level 2 Certified



SCALE: 1/4" = 1'-0"